

Flora X20

High Productivity UV Hybrid

Improve your printing versatility
using a UV Hybrid solution
powered by Ricoh.



Up to 116m²/h

Full colour on rigid
or flexible





**RICOH Gen6
PRINTHEAD
Technology
On Board**



Powered by **RICOH**

Explore the huge potential of UV Hybrid printing offered by Ricoh

Get ready for high flexibility and versatility for your business. Ricoh's new offering can transform your all your wide format printing.

An ALL-IN-ONE solution that offers a combination of features that make it versatile and suitable for a variety of applications.

High quality printing on rigid and roll-fed materials, productivity, quality and speed are part of our proposition, and automatic features such as media height detection and vacuum operation foot pedal simplifies the process.

A simple, easy to use, intuitive and flexible solution requiring a smaller footprint than other UV flatbed systems with easier installation and an easy return on investment. Hybrid UV printing technology is increasingly popular among signmakers, graphics manufacturers, design & advertising agencies, retailers and screenprinting companies.

Let Ricoh support you.



Sign and display



Textile



Packaging



Commercial



Label

High-definition & High-productivity

A minimized 5pl droplet size and improved jetting accuracy yields excellent print quality without graininess.

Head achieves high-resolution 600dpi printing

High Colour Gamut & Vibrancy Inks

Ricoh Printheads offer a bright and vibrant colour gamut, with excellent quality print, even small fonts and media adhesion



ColorGATE

The ColorGATE Ricoh Hybrid Edition Rip software for the professional printing business. Extensive and scalable at any time.

A powerful, cost-effective solution for companies and service providers who want to cover all the segments in large-format printing (LFP), and who have high demands on quality, reliability and professional results.

This software is modular in design to allow for expansion at any time.

Ricoh Printheads

Ricoh's MH5320 variable dot Gen6 inkjet printheads are made of stainless steel, designed to deliver day-one quality over years of reliable use.



Ink Configurations

3 available;

- CMYK (4 Gen6 Printheads)
- CMYKWW (6 Gen6 Printheads)
- CMYKWCi (6 Gen6 Printheads)



Media Detection

Automatic media thickness detection system.



LED UV Curing Lamps

Angled and water cooled LED curing lamps for elongated life, better colour fixing and energy saving.



Linear Motor

High speed and smooth carriage motion, offering high acceleration and deceleration improving accuracy, reducing maintenance and energy consumption.



Adjustable Vacuum

Pedal operated and adjustable vacuum printing platform stabilises media feed, simplifying operator usage.



RICOH UV Hybrid

Ricoh Service & Support

Ricoh EMEA Sales and Service support to offer consultancy during demos and media testing. Onsite support during device installation and configuration and renowned Ricoh Support in the field.



RIP Software

ProductionServer Select Ricoh Hybrid Edition, where precision meets automation to help you bring your printing operations to new heights and fully scalable.



LED Lightbox System

Built-in LED light strip to preview print quality during print.



Ricoh Colorbase Portal

Dedicated Ricoh ICC profile portal.
<https://colorbase.com/rich>

COLORBASE



Sign & Graphics

Decor

Common

Print Service Provider

Packaging/Panel
Advertising/Panel display
Sign/(Guide) board



Wallpaper Covering
Event Furniture
Wall Decoration
Floor Graphics
Acrylics
Promotional Items



Manufacturing

Building Material
Home Equipment
Flooring material
Furniture



Outdoor



Outdoor Poster & Ad Signs
Billboards

Exhibitions & Events

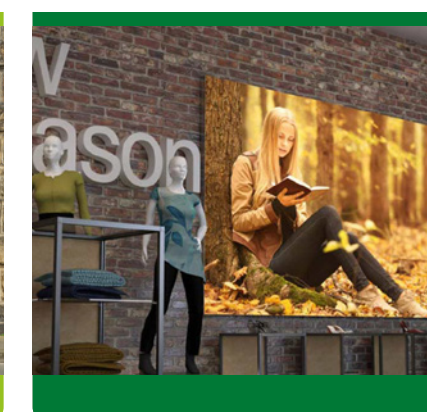


Soft Signage & Interior Fabric Signs
Banners

Indoor, Retail & POP



Indoor Posters
Window Graphics



X20 Hybrid

SYSTEM SPECIFICATIONS

GENERAL

Ink Type:	UV Curable
Head Type:	Ricoh GEN6 high speed piezo durable print heads (MH5320)
Resolution:	300dpi, 600dpi, 900dpi, 1200dpi
Droplet Size:	5pl
Curing Method:	LED Lamps (Water Cooled)
Ink Set Combinations:	4-colour mode (CMYK) - 4 Gen6 Printheads 5-colour mode (CMYK + Double White) - 6 Gen6 Printheads 6-colour mode (CMYK + White + Clear) - 6 Gen6 Printheads
Ink Bottle Capacity:	1L
Ink Tank Capacity:	2.5L
RIP Software:	ColorGATE ProductionServer - Ricoh Hybrid Edition

PRODUCTIVITY

Draft:	2 Pass - 726x300dpi @ 116m2/h	Quality:	8 Pass - 726x900dpi @ 25m2/h
Production:	4 Pass - 726x600dpi @ 67m2/h	High Quality:	12 Pass - 726x1200dpi @ 14m2/h
Standard:	6 Pass - 726x600dpi @ 49m2/h		

MEDIA HANDLING

Handling:	Adjustable vacuum belt drive system with 2 modular tables included	Media Feed Length:	Maximum 300m or less
Thickness:	51mm	Maximum Media Weight:	100kg
Media Size:	Maximum W2000	Maximum Rigid Weight:	50kg/m2 (non concentrated load)
		Roll Outside Diameter:	Maximum 300mm or less

ENVIRONMENT CONSIDERATIONS

Temperature:	20-30°C	Interface:	USB 3.0
Humidity:	40-80% (non condensing)	Power Source:	AC220-240V Single Phase 50/60Hz 32A
Dimensions (WxDxH):	4200mm x 1000mm x 1750mm	Recommended Air Supply:	0.6MPa (90psi)
Weight:	1700kg (Printer only), 1900kg (Printer and Tables)	Air Tank Capacity:	30L

PC SPECIFICATIONS

Print Control Software only

Windows OS:	Windows 11
CPU:	Intel Core i7 3.3GHz or more recommended
RAM:	8GB or more recommended
HDD:	Recommended - 500GB or more Install Space - 1GB or more Working Space - 100GB

ColorGATE Select Version

Windows OS:	Windows 11
CPU:	Intel Core i7 Quad Core
RAM:	16GB or more recommended
HDD:	Recommended - 500GB or more Working Space - 120GB

PC Monitor

Size:	21-23 inch
Depth:	Maximum 55mm
Resolution:	1280 x 1024, 16-bit or higher
Mount:	VESA Standard 75 -115mm