

RICOH Always Current Technology

Scalable intelligence



Scalable and intelligent solutions for forward-thinking businesses

Keen to implement technology that intelligently updates itself? Looking for hardware that can be scaled to meet changing business needs? We have the answer. With RICOH Always Current Technology enabled, the software powering your intelligent device can be regularly updated.

With work styles and technology constantly evolving, our customers look to us for product enhancements that will drive productivity and improve efficiency. To protect your investment in Ricoh technology, we've changed the way that we make new features and updates available.

RICOH Always Current Technology allows us to deliver timely solutions to your changing needs. With RICOH Always Current Technology enabled, the capabilities of your RICOH Intelligent Device can grow with you.



Smart evolution

Printers and multifunctional devices are essential business tools. We continuously develop our products, enhancing functionality and adding new features that make them ever more productive and efficient. RICOH Always Current Technology allows you to benefit from the latest enhancements without needing to upgrade from one model to another.

With RICOH Always Current Technology, you can access the latest features and functionality years after the initial release date.

Dynamic scalability

With RICOH Always Current Technology, the capabilities of your device can grow with your business. Our platform allows you to install new features as they become available; there is no need to call a technician or wait until the end of a contract. New applications can be downloaded directly from the RICOH Application Site.

You can invest with confidence in Ricoh technology, knowing that its functionality and value will grow over time.

Intelligent security

To protect your business, our devices conform to IEEE 2600. And since a Ricoh-only operating system sits at the heart of our security model, our devices do not share the vulnerabilities of other generally available operating systems. No unnecessary components are installed, root access is denied, and embedded applications must pass compatibility tests before they can run on the device.

With RICOH Always Current Technology updates, you can be assured that your device security is up to date.



Dynamic Workplace Intelligence



RICOH Always Current Technology is an enabler and a core part of the intelligent technological ecosystem developed by Ricoh to empower your business.

That ecosystem - Dynamic Workplace Intelligence - encompasses RICOH Intelligent Devices, RICOH Always Current Technology, Ricoh Smart Operation Panel, RICOH Application Site, RICOH Smart Integration and RICOH Intelligent Support.

Dynamic Workplace Intelligence is about connecting our capabilities, and intelligently integrating Ricoh hardware, software, applications and support, to build seamless workflows that meet your business needs. A smarter workplace means a more agile, capable and productive business. Dynamic Workplace Intelligence will set your team up for success, allowing your employees to focus on what they do best.

RICOH Intelligent Devices

With RICOH Intelligent Devices, you benefit from outstanding quality, reliability and security. What is more, you can connect your RICOH Intelligent Device to external cloud services and install workflow applications which help your employees work faster, smarter and more securely.



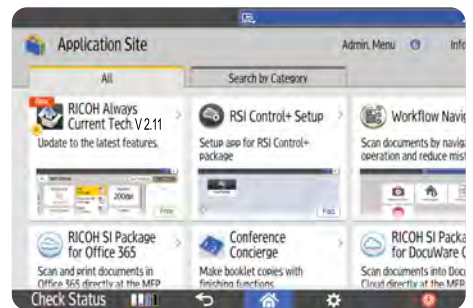
Smart Operation Panel

Unlock the full extent of your device capabilities with the user-friendly Smart Operation Panel. Its intuitive touchscreen interface mimics that of your smart device. And, because it is consistent across all RICOH Intelligent Devices, it provides a uniform and easy-to-use platform.



RICOH Application Site

Accessed via the Smart Operation Panel of your RICOH Intelligent Device, the RICOH Application Site allows you to download and run a variety of smart applications on your device. The apps are designed to meet specific business needs and will help to streamline your workflow.



RICOH Smart Integration

RICOH Smart Integration (RSI) helps automate document workflow tasks without the capital expense of on-premises software. RICOH Smart Integration makes it simple to print from a mobile device or easily scan to email, local folders, or cloud services (e.g. Box™, Dropbox™, Google Drive™, OneDrive® for Business, etc.).



RICOH Intelligent Support

Our multifaceted service and support platform provides help when it is needed. How-to videos can be accessed via the Smart Operation Panel to help you quickly and easily complete simple tasks like toner replacement. And if required, we are able to provide fast support via remote access to your Smart Operation Panel.



Smart updates delivered to your device

Easy automatic updates

RICOH Always Current Technology is a standard feature of the latest RICOH Intelligent Devices. Quietly supporting you, it can automatically download software updates. And, much like your smartphone, it will prompt you to activate the updates at your convenience. The process is simple, secured and fast.



Simple manual control

RICOH Always Current Technology is enabled by default, but should you prefer to manually update your device, updates can be downloaded directly from the RICOH Application Site. If your device does not have internet access, your Ricoh Customer Service Engineer can install updates from an SD card.

To download the latest version 2.11

RICOH Always Current Technology was introduced with selected RICOH Intelligent Devices in early 2019. The latest version can be installed from the Application Site and offers enhancements that improve device functionality and simplify operation.

1. Navigate to the RICOH Application Site.
2. Select **RICOH Always Current Technology**.
3. Select **Install**.
4. When the installation is complete, your device will restart, running the latest version of RICOH Always Current Technology.*

*Restart and activation only required if firmware is not up to date

Note: Your device must be compatible with RICOH Always Current Technology, must be connected to the internet and have access to the RICOH Application Site. If your device does not meet these criteria, please contact your local Ricoh service support centre.

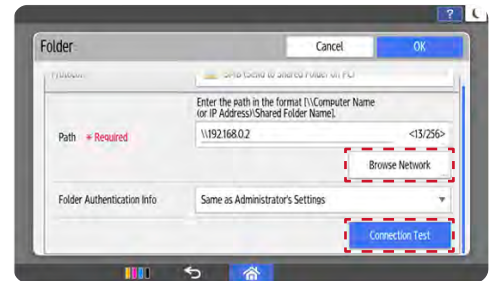


RICOH Always Current Technology V2.11

Enhanced user features

Usability improvements when browsing the network and failing due to input error

If you notice an error, a network search can be interrupted for a destination folder of SMB transmission and the connection test when using Send to Folder, or registering a folder in the Address Book. This allows you to resolve the issue immediately without having to wait for the search to timeout.

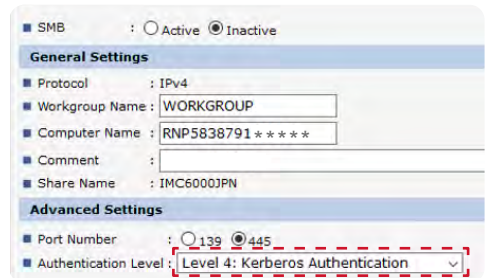


RICOH Always Current Technology V2.11

Enhanced security features

Kerberos Authentication for Scan to Folder

When using Scan to Folder, you can select Kerberos Authentication in the settings in SMB data transmission. Kerberos level 4 is an open protocol in a more secure environment.



SMB encryption by file server unit

You can use SMB data transmission (e.g. Scan to Folder and Fax transfer) to an encrypted file server. Ricoh supports both SMB encryption levels (global and share) when using SMB communication and you can encrypt on a per file server basis.



SMBv3.1.1 for Windows Authentication

You can use SMBv3.1.1 for Windows Authentication and data transmission for a higher level of security.

Ricoh Europe PLC

20 Triton Street
NW1 3BF London
United Kingdom



+44(0)20 7465 1000



www.ricoh-europe.com

RICOH Always Current Technology V2.11, released October 2022

RICOH
imagine. change.

Ricoh Always Current Technology and/or other Ricoh updates may not be available for all models. Access to specific features may be limited based on manufacture date or other limitations. Please consult with your sales representative if you want to take advantage of features beyond the capability of your current device. Specifications and external appearance are subject to change without notice. The colour of the actual product may vary from the colour shown in the brochure. The images in this brochure are not real photographs and slight differences in detail might appear. All brand and/or product names are trademarks of their respective owners. Copyright © 2021 Ricoh Europe PLC. All rights reserved. This brochure, its contents and/or layout may not be modified and/or adapted, copied in part or in whole and/or incorporated into other works without the prior written permission of Ricoh Europe PLC.