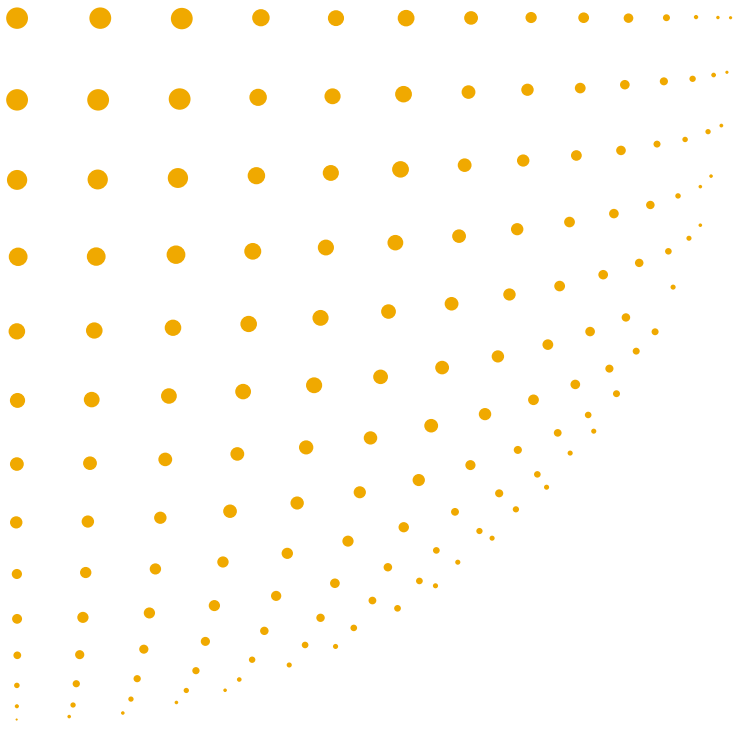


## Professional colour management for light production



# Raising the bar for colour printing

Accurate printing of colour documents and short turnarounds are musts for customer satisfaction. Ricoh and EFI join efforts to present you with a complete, professional solution. Upgrade your MP C2800/MP C3300 with an E-3100, your MP C4000/MP C5000 with an E-5100 Color Controller. Fast ripping and enhanced PostScript™ printing are the basic qualities with which they improve your colour workflow.

- Speed up productivity.
- Greater colour reproduction.
- Advanced job/queue management.
- Easy-to-use graphic driver interface.
- Safeguard confidential information.



## Achieve more



### BE PRODUCTIVE

Accomplish more in less time: the E-3100/E-5100 ensure high print performance. Ripping fast and printing simultaneously, the controllers process text and images under the same optimum conditions. Speedy processors and large RAM memories help you achieve minimal turnaround times.



### BE EFFICIENT

Managing jobs and queues efficiently frees up time for other tasks. Command WorkStation provides you with the tools to do so. The programme connects and monitors more than five Fiery servers. Check them for job details and sequence. Balance workloads, import and export jobs, and check thumbnail previews to gain time and avoid mistakes.



### MATCH & MANAGE BRILLIANT COLOURS

To make sure that your MFP prints colours as consistently as possible, the E-3100/E-5100 feature ColorWise Pro tools. Calibrate the Fiery precisely and create and manage exact colour profiles. Spot-On named colour management and a Color Profiler Suite complete with spectrophotometer software and hardware are optionally available.

## Color Controller E-3100/E-5100



### **OFFER EXCELLENT QUALITY**

Because RGB colour space need not be converted in order to print PostScript™, errors are minimised. Optimal colour reproduction is the result. Moreover, our new chemical toner is capable of reproducing the finest gradations. Achieve images close to offset photographic prints with the newly-added Dot Screen mode. Optional Auto-Trapping helps you avoid white auras.

### **BENEFIT FROM FULL EFI FUNCTIONALITY**

- Assemble documents swiftly with intuitive imposition features.
- Print directly from mass storage devices with USB Media Print.
- Digitise easily with a range of scan-to functionalities.
- Drag and drop a job into a Hot Folder to have it processed according to preset requirements (optional).

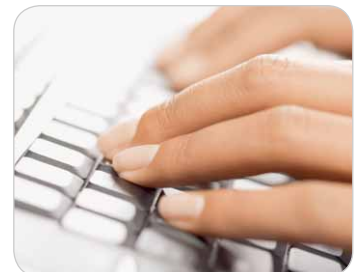


### **ENJOY STRAIGHTFORWARD VARIABLE DATA PRINTING**

EFI's VDP solution simplifies Variable Data Printing. Just import information from your database into a document master design. You can preview the layout before ripping, and test prints to reduce spoilage. Reprints are also possible. The learning curve for working with this tool is surprisingly short.

### **PROFIT BY EASY OPERATION**

Attain sophisticated results at the click of a button. With their graphical user interface, the E-3100 and E-5100 make even complex tasks easy to carry out. Command WorkStation has a customisable window interface that users can adapt to their own level of expertise.



# Color Controller E-3100/E-5100

## COLOR CONTROLLER E-3100/E-5100

CPU:	Intel Celeron M440 1.86GHz
Memory:	1 GB
HDD:	80 GB
Print speed:	Full colour: 28/33/40/50 prints per minute B/W: 28/33/40/50 prints per minute
Printer language:	Standard: Adobe® PostScript® 3™, PCL6
Resolution:	600 dpi/4 bit, 2 bit (Default: 4 bit)
Interface:	Ethernet 10 base-T/100 base-T/1000 base-T USB 2.0 (for USB Media Print)
Network protocol:	TCP/IP (IPv4, IPv6) SMB AppleTalk (Auto-switching) Bonjour
Fonts:	Adobe® PostScript® 3™: 138 fonts PCL: 80 Agfa fonts
Utility software:	Standard: Windows driver (32 bit) Windows driver (64 bit) Macintosh OS X driver/PPD installer Command WorkStation Windows Edition v4.7 Command WorkStation Macintosh Edition v1.6 ColorWise Pro Tools Fiery Scan (Twain plug-in, Remote Scan) Printer Delete Utility Fiery Web Tools Fiery Bridge (Windows XP only) Option: EFI Impose Color Profiler Suite (UV and non-UV version) Auto Trapping Spot-On Hot Folders

For availability of models, optional apparatus and software, please consult your local Ricoh supplier. For detailed specifications of the Aficio™MP C2800/MP C3300 and Aficio™MP C4000/MP C5000, please visit [www.ricoh.eu](http://www.ricoh.eu) or consult the individual product brochures.

# RICOH

[www.ricoh.eu](http://www.ricoh.eu)

ISO9001: 2000 certified ISO14001 certified

All brand and/or product names are trademarks of their respective owners. Specifications and external appearance are subject to change without notice. The colour of the actual product may vary from the colour shown in the brochure. The images in this brochure are not real photographs and slight differences in detail might appear.

Copyright © 2009 Ricoh Europe PLC.

All rights reserved. This brochure, its contents and/or layout may not be modified and/or adapted, copied in part or in whole and/or incorporated into other works without the prior written permission of Ricoh Europe PLC.



For more information, please contact